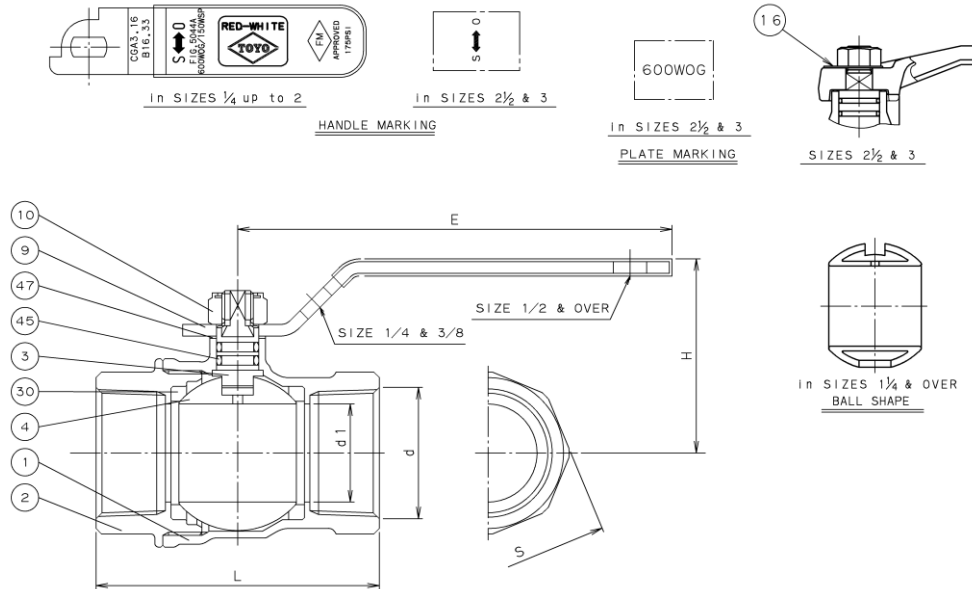


600WOG FORGED BRASS SCREWED END BALL VALVES

FULL BORE TYPE



Materials

No.	Name of parts	ASTM Specifications		
1	BODY	FORGED BASS	B283-C37700	
2	CAP	FORGED BASS	B283-C37700	
3	STEM	BRASS ROD *1		
4	BALL	FORGED BASS *2	B283-C37700	
9	LEVER HANDLE	CARBON STEEL *3		SIZES 1/4 to 2
		DUCTILE IRON		SIZES 2 1/2 & 3
10	HANDLE NUT	CARBON STEEL *4		
16	PLATE	ALUMINUM		SIZES 2 1/2 & 3
30	BALL SEAT	PTFE		
45	O-RING	FKM		
47	THRUST WASHER	PBT		SIZES 1/4 to 2
		R-PTFE		SIZES 2 1/2 & 3

- *1 Ni PLATEING.
- *2 Cr PLATEING.
- *3 ZINC PLATNG & PLASTIC COVER.
- *4 ZINC PLATING.

Dimensions

Mark	Size	1/4	3/8	1/2	3/4	1	1 1/4	1 1/2	2	2 1/2	3
d		NPT1/4	NPT3/8	NPT1/2	NPT3/4	NPT1	NPT1 1/4	NPT1 1/2	NPT2	NPT2 1/2	NPT3
d1	mm	10	10	15	20	25	32	40	50	65	76
H	mm	37	37	40	43	50	55	64	72	100	112.5
L	mm	42	42	53	60	72	84	92	110	138	167
E	mm	70	70	80	80	110	110	150	150	200	300
S	mm	20	22	26	32	39	48	55	68	84	99

Working Pressures

Working pressures Non-Shock
Water,Oil,Gas
4.14MPa
600psi

*Design and materials are subject to change without notice.