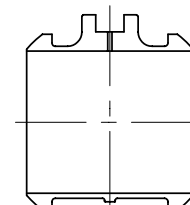
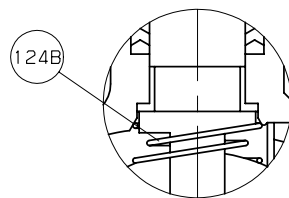


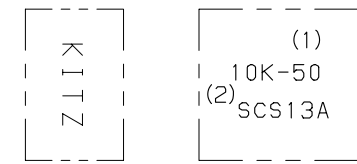
UP TO SIZE 32



SIZE 200 & OVER
CORED CAVITY



UP TO SIZE 50



ONE SIDE THE OTHER SIDE

MARKING ON THE BODY

| | |
|---------------------|-----|
| SUPPLY AIR PRESSURE | MPa |
| STANDARD PRESSURE | 0.4 |

| NO | NAME OF PARTS | QTY | MATERIALS | SPECIFICATIONS |
|------|--------------------|-----|-----------------|---|
| 1 | BODY | 1 | STAINLESS STEEL | SCS13A |
| 2 | BODY CAP | 1 | STAINLESS STEEL | SCS13A |
| 3 | STEM | 1 | STAINLESS STEEL | SUS304 |
| 4 | BALL | 1 | STAINLESS STEEL | SUS304 OR SCS13A |
| 7A | GLAND | 1 | STAINLESS STEEL | SCS13A |
| 7B | GLAND | 1 | STAINLESS STEEL | SUS304 |
| 8 | GLAND PACKING | 1S | PTFE | |
| 19 | GASKET | 1 | PTFE | |
| 20 | PACKING WASHER | 1 | STAINLESS STEEL | SUS316L (UP TO SIZE 32) |
| 30 | BALL SEAT | 2 | HYPATITE PTFE | |
| 33 | CAP NUT | 1S | STAINLESS STEEL | A194 Gr.8 |
| 34A | GLAND NUT | 1S | STAINLESS STEEL | |
| 34B | NUT | 1S | STAINLESS STEEL | |
| 35 | CAP BOLT | 1S | STAINLESS STEEL | A193 Gr. B8 CL2 |
| 36 | GLAND BOLT | 1S | STAINLESS STEEL | |
| 47 | THRUST WASHER | 1 | G/F PTFE | (SIZE 100 & OVER) |
| 67 | STEM BEARING | 1 | G/F PTFE | |
| 92 | CONNECTOR | 1 | STAINLESS STEEL | SCS13A OR SUS304 |
| 93 | BRACKET | 1 | DUCTILE IRON | FCD450-10 |
| 94 | BOLT | 1S | STAINLESS STEEL | SUS304 |
| 96 | PNEUMATIC ACTUATOR | 1 | | |
| 99 | SET BOLT | 1S | STAINLESS STEEL | SUS304 (SIZE 80 & OVER) |
| 124A | SPRING & PIN | 1S | STAINLESS STEEL | SUS316-WPA & SUS316 (SIZE 65 & OVER) |
| 124B | SPRING | 1 | STAINLESS STEEL | SUS316-WPA (UP TO SIZE 50) |
| 145 | SPRING WASHER | 4 | STAINLESS STEEL | SUS304-CSP |
| 155 | SPACER | 1 | CARBON STEEL | SS400 (SIZE 40 & OVER) |

1S=1 SET

DIMENSIONS

| NOMINAL SIZE | UNIT: mm | | | | | | | | | | | | | | | | | | | | | |
|--------------|------------|-----|-----|-----|-----|-----|-----|-----|-----------|----|-----------|---------------|-------------------|------------------------------|---|-----|------|-----|-----|-----|-----|-------|
| | END FLANGE | | | | | | | | | | | ACTUATOR SIZE | APPROX. MASS (kg) | PNEUMATIC ACTUATOR TYPE: FA- | | | | | | | | |
| | A | B | d | H | H1 | L | L1 | D | BOLT HOLE | | BOLT SIZE | | | g | t | f | SIZE | E1 | E2 | W1 | W2 | P |
| 15 | 1/2 | 15 | 225 | 155 | 110 | 42 | 95 | 70 | 4 | 15 | M12 | 51 | 12 | 1 | 1 | 4.5 | 1 | 87 | 87 | 50 | 54 | Rc1/4 |
| 20 | 3/4 | 20 | 228 | 158 | 120 | 47 | 100 | 75 | 4 | 15 | M12 | 56 | 14 | 1 | 1 | 4.9 | 2 | 107 | 107 | 54 | 70 | Rc1/4 |
| 25 | 1 | 25 | 235 | 165 | 130 | 50 | 125 | 90 | 4 | 19 | M16 | 67 | 14 | 1 | 1 | 6.8 | 3 | 128 | 128 | 57 | 87 | Rc1/4 |
| 32 | 1.1/4 | 32 | 239 | 169 | 140 | 56 | 135 | 100 | 4 | 19 | M16 | 76 | 16 | 2 | 1 | 8.2 | 4 | 160 | 160 | 68 | 111 | Rc1/4 |
| 40 | 1.1/2 | 40 | 297 | 217 | 165 | 67 | 140 | 105 | 4 | 19 | M16 | 81 | 16 | 2 | 2 | 12 | 5 | 208 | 208 | 78 | 135 | Rc1/4 |
| 50 | 2 | 50 | 304 | 224 | 180 | 74 | 155 | 120 | 4 | 19 | M16 | 96 | 16 | 2 | 2 | 14 | 6 | 268 | 268 | 101 | 178 | Rc1/4 |
| 65 | 2.1/2 | 65 | 345 | 259 | 190 | 85 | 175 | 140 | 4 | 19 | M16 | 116 | 18 | 2 | 3 | 22 | | | | | | |
| 80 | 3 | 80 | 413 | 305 | 200 | 95 | 185 | 150 | 8 | 19 | M16 | 126 | 18 | 2 | 4 | 31 | | | | | | |
| 100 | 4 | 100 | 436 | 328 | 230 | 110 | 210 | 175 | 8 | 19 | M16 | 151 | 18 | 2 | 4 | 41 | | | | | | |
| 125 | 5 | 125 | 520 | 388 | 300 | 150 | 250 | 210 | 8 | 23 | M20 | 182 | 20 | 2 | 5 | 69 | | | | | | |
| 150 | 6 | 150 | 545 | 413 | 340 | 170 | 280 | 240 | 8 | 23 | M20 | 212 | 22 | 2 | 5 | 92 | | | | | | |
| 200 | 8 | 200 | 628 | 476 | 450 | 225 | 330 | 290 | 12 | 23 | M20 | 262 | 22 | 2 | 6 | 142 | | | | | | |

NOTE (1) VALVE SIZE IDENTIFICATION.

(2) EITHER SCS13A OR S13A IS INDICATED.

| STANDARD | FACE TO FACE OR END TO END | | KITZ STANDARD | |
|----------|----------------------------|--|-----------------------|--|
| | END CONNECTION | | JIS B2220 10K | |
| | WALL THICKNESS | | ASME B16.34 CLASS 150 | |
| | PRESSURE TEST | | KITZ STANDARD | |
| FIGURE | | | FA-10UTB | |

10K CAST STAINLESS STEEL BALL VALVES
WITH PNEUMATIC ACTUATOR
ANTI-STATIC DEVICE, FULL BORE, FLANGED ENDS.

| | | | | | |
|-----------|-------------|------------|--------|------|------|
| DATE APPD | JAN. 26' 15 | DRAWING NO | △ | | |
| APPD BY | T. KOYANAGI | 965-F50106 | △ | | |
| CHKD BY | K. NAKAI | | △ | | |
| DSGND BY | Y. INOUE | | △ | | |
| DRAWN BY | M. OTA | | REV-09 | MARK | DATE |

KITZ CORPORATION