

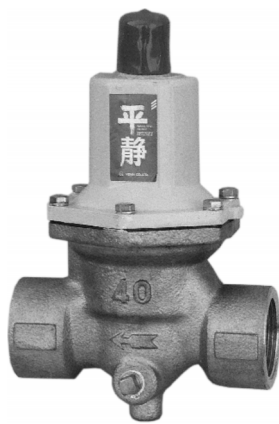
RD-35 ~ 36F Type Pressure Reducing Valve (for Water, Hot Water or Air)

2

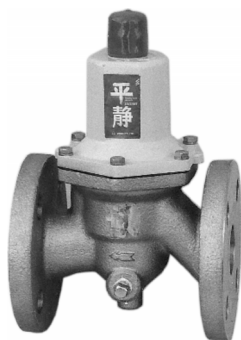
PRESSURE REDUCING VALVES (FOR WATER, HOT WATER OR AIR)

Pressure reducing valves for water, with stainless body and disc & seat made of stainless steel.

High controllability, reliability, corrosion resistance. Suitable for applications in plants.



Screw Type



Flange Type

FEATURES

- The stainless steel valve body repels rusty water, and suitable for the usage in the stainless steel pipeline.
- Low noise design.
- 50% smaller, lighter than traditional cast iron.
- No water leakage even if the diaphragm is broken.
- Flexible installation^{*2}.
- Allows direct installation of pressure gauge on the body (only for the secondary side).

SPECIFICATIONS

Type	For pressure of less than 1.0MPa		For pressure of less than 1.6MPa	
Model name	RD-35 L/H	RD-35F L/H	RD-36 L/H	RD-36F L/H
Code name	RD35-D □	R35F-D □	RD36-D □	RD36F-D □
Size	15-40(½"~1½")	25-100(1"~4")	15-40(½"~1½")	25-100(1"~4")
End connection	Screwed JIS Rc	Flanged JIS10KFF	Screwed JIS Rc	Flanged JIS16KFF
Applicable primary pressure	Max. 1.0MPa		Max. 1.6MPa	
Applicable fluid	Water, hot water, air & inert gases		Water & hot water	
Fluid temperature	5~90°C			
Adjustable secondary pressure	L:0.05~0.35MPa, H:0.3~0.7MPa			
Maximum reducing rate	10:1			
Minimum pressure differential across the disc	0.05MPa			
Leakage allowance	Nil(Confirm at pressure gauge)			
Materials	Body(Stainless steel), Trim(Stainless steel), Diaphragm & disc(Synthetic rubber) Spring case(Size 15~50mm:Cast zinc, Size 65~100mm:Cast iron)			
Valve body pressure test	Hydraulic 1.75MPa		Hydraulic 2.4MPa	

*1. Valves with pressure gauge are also available. (Secondary side)

*2. The size for installation on vertical pipeline is up to 80mm. And there should be a relatively large space for maintenance.

(Valves above 100mm in size should be installed to horizontal pipe vertically.)

*3. RD-35 and 35F Types with Max. 130°C for cleaning steam in temporary use at beverage industry, etc. are available upon your request.

DIMENSIONS(RD-35, 36 Type)

(mm)

Size	d	L	G	H	A	Mass(kg)
15(½")	½"	130	41	140	100	2.5
20(¾")	¾"	130	41	140	100	2.5
25(1")	1"	130	41	141	100	2.6
32(1¼")	1¼"	150	50	187	116	4.8
40(1½")	1½"	150	50	187	116	4.8

DIMENSIONS(RD-35F, 36F Type)

(mm)

Size	d	L	G	H	A	Mass(kg)
25(1")	¼"	160	41	141	100	5.1
32(1¼")	¼"	160	50	187	116	7.2
40(1½")	¼"	160	50	187	116	7.8
50(2")	¼"	210	50	206	142	12
65(2½")	¾"	215	70	280	162	20
80(3")	¾"	260(264)	70	285	162	23(25)
100(4")	¾"	300(308)	78	345	201	36(40)

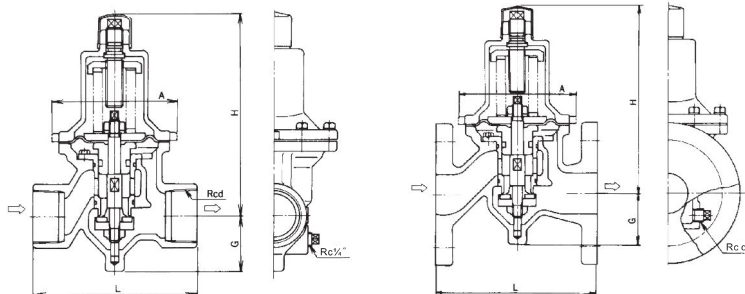
* Figures in () are for RD-36F Type. Other figures are common to all types.

Flange code JIS 10(16)KFF

CONSTRUCTION

RD-35, 36 Type

RD-35F, 36F Type



※ The structure of the valve may be different depending on sizes.